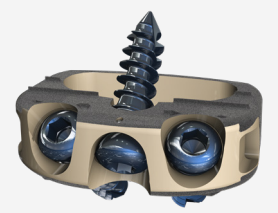




TIGER MADE HIS COMEBACK WITH...

CENTINEL
SPINE®

and the
STALIF M Ti™
ANTERIOR LUMBAR
INTEGRATED SOLUTION



CENTINEL
SPINE®

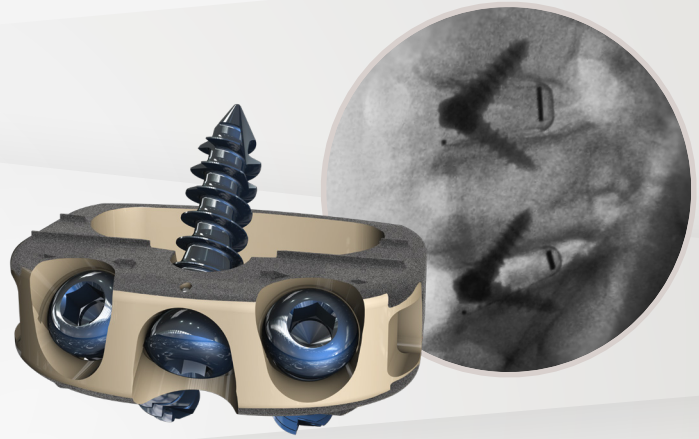
The Leader in Anterior
Column Reconstruction



MKT0207 Rev1 (07/2019)

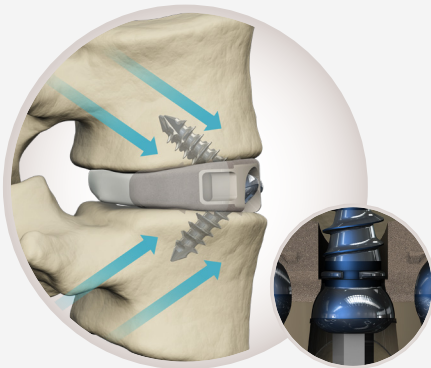
STALIF M Ti™

No Profile® Anterior Lumbar
Integrated Interbody™ Fusion System



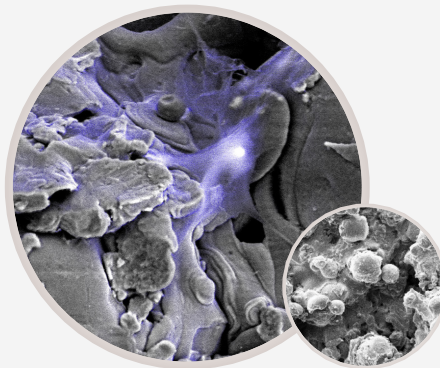
Centinel Spine's foundation includes developing and launching the first Anterior Lumbar Integrated Interbody™ fusion device in the world in 1988. Seven generations of technology later, Centinel Spine today remains a leader in Integrated Interbody fusion devices and the STALIF® fusion technology has a proven 30+ year clinical history—with over 66,000 devices implanted worldwide.

The STALIF M Ti Advantage



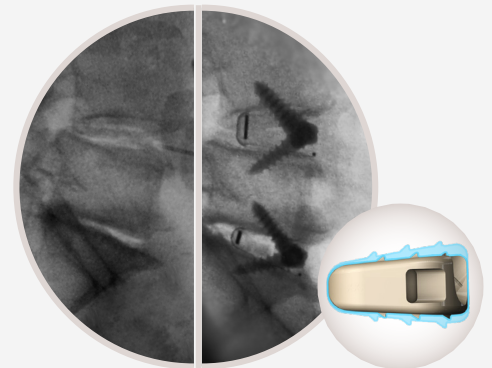
Integrated Compressive Lag Fixation

STALIF® is unique because it compresses the endplates to the implant & graft material, providing optimized segmental loading to support bone fusion in line with Wolff's Law. Biomechanical testing has proven that the STALIF® technology performs equally to anterior constructs with plate & interbody, as well as posterior pedicle screw and cage constructs.¹



Three-Dimensional Microporous Titanium Surface

Enhances opportunities for fusion. Ti-ACTIVE™ surface technology has been engineered with over 15 years of science and tests have proven that the surface facilitates 2x the cellular attachment and provides 20x more cellular proliferation than other titanium surfaces.²



Multiple Footprints & Lordotic Options

Multiple device footprints & geometries are available to match patient anatomy for optimal endplate contact. Implant options up to 20° of lordosis aid in sagittal balance restoration.