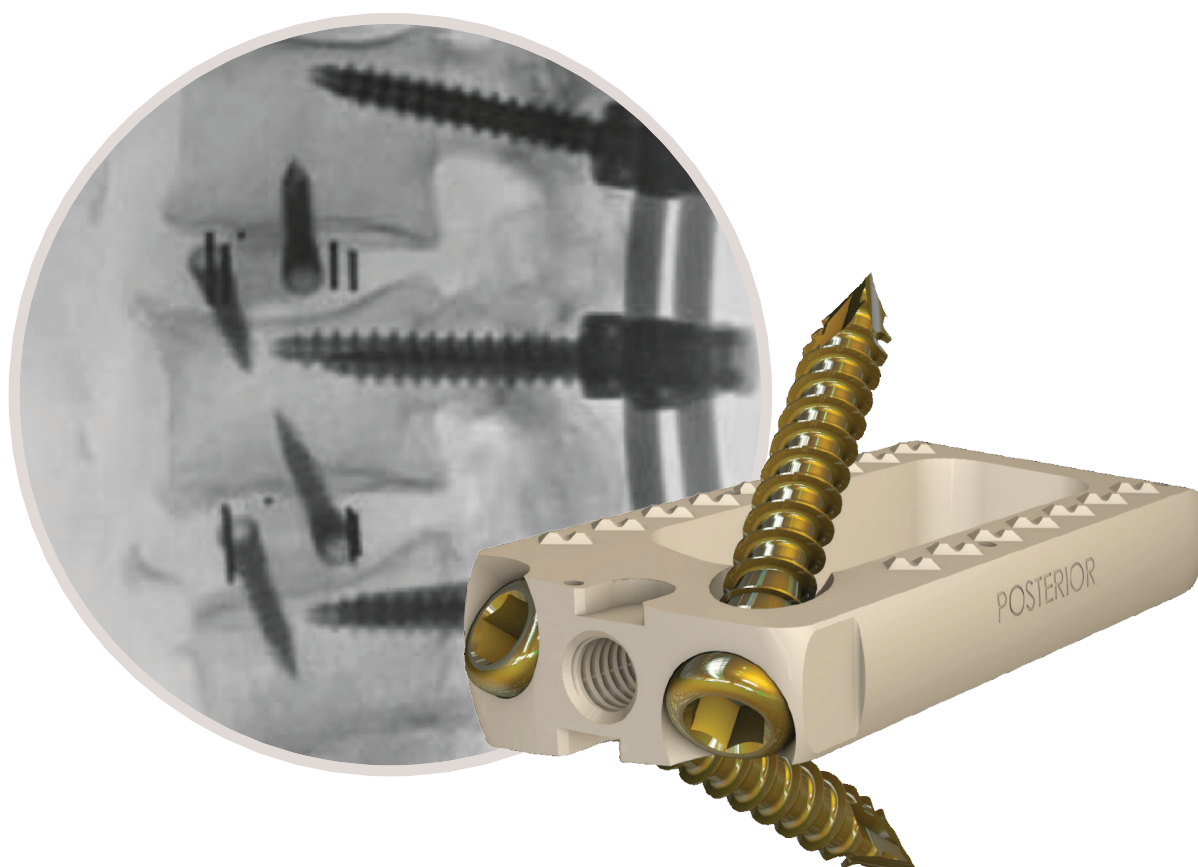


STALIF L™

NO-PROFILE® MIS LATERAL LUMBAR INTEGRATED INTERBODY™ SYSTEM



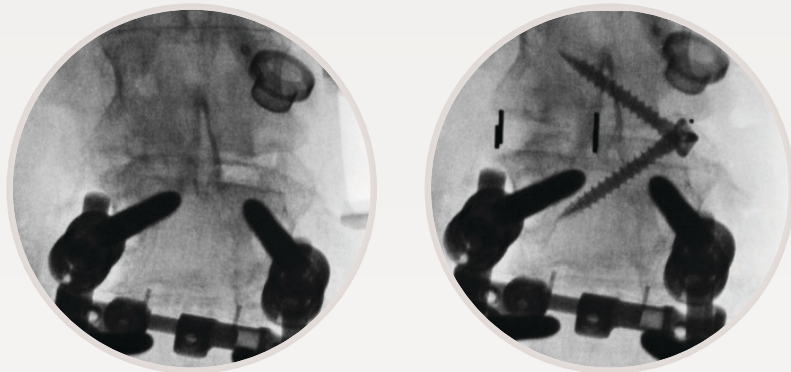
NO-PROFILE®
DESIGN

MULTIPLE FOOTPRINTS
& LORDOTIC CONFIGURATIONS

INTEGRATED COMPRESSIVE
LAG FIXATION

CLINICAL APPLICATIONS

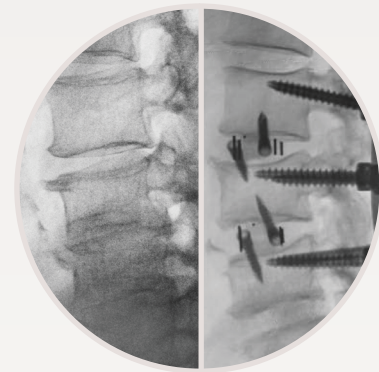
Streamline Lag Screw Fixation



Before **STALIF L™**

After **STALIF L™***

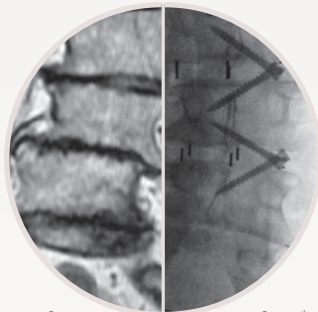
Restore Sagittal Balance



Before

After

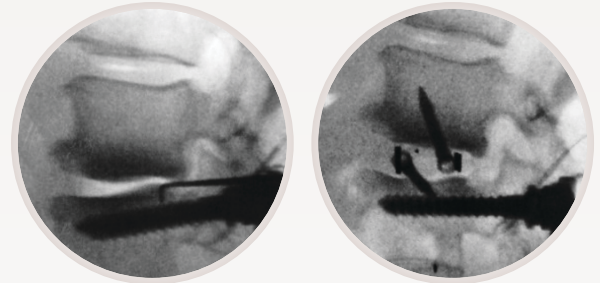
Recreate Segmental Alignment and Stability



Before

After*

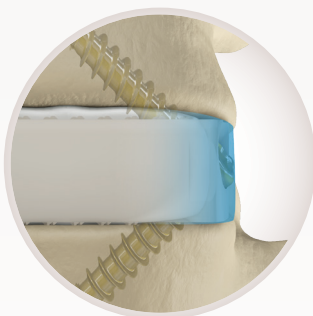
Provide Indirect Decompression



Before **STALIF L™**

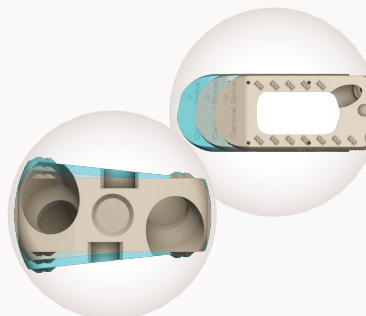
After **STALIF L™***

FEATURES & BENEFITS



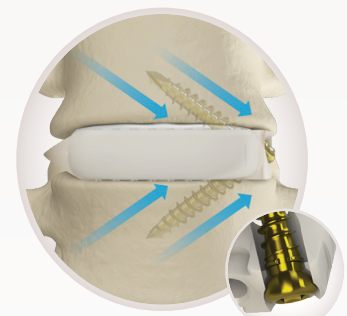
No-Profile® Design

- ➔ Eliminates profile of plate, allowing for an optimal load transfer within the vertebral segment
- ➔ Spares tissue with smaller surgical envelope to insert implant and integrated fixation
- ➔ Simplifies surgical technique to implant device (no faceplate needed)



Multiple Footprints & Lordotic Options

- ➔ Match patient anatomy for optimal endplate contact
- ➔ Aid in sagittal balance restoration
- ➔ Contain large open graft cavity to increase opportunities for fusion



Integrated Compressive Lag Fixation

- ➔ Enhances stability with self-tapping, self-drilling, cancellous lag screws and Anti Back-Out (ABO®) Technology
- ➔ Compresses endplates to cage & graft providing optimized segmental loading to support bone development in line with Wolff's Law

*This is an inter-operative image taken prior to the implantation of supplemental fixation. **STALIF L™** is indicated for use with supplemental fixation.